



New Lanark Mill Hotel

2005

Conference Brochure

*"To train and educate the rising population will at all times be
the first object of society"*

Robert Owen, Manager of New Lanark 1800 – 1825

At the award-winning New Lanark Mill Hotel, you can be sure that we'll do everything possible to make your conference or meeting run smoothly. From registration to departure, our professional team offers a comprehensive service at a price you can afford.

You couldn't find a more unusual or spectacular location for your training needs. The Hotel is a stunning conversion of an original 18th century mill, and enjoys wonderful views over the River Clyde and conservation area. The village is now a World Heritage Site, and is surrounded by native woodland protected by the Falls of Clyde Wildlife Reserve.

The hotel's elegant facilities combine original features such as barrel vaulted ceilings and Georgian windows with every modern convenience you would expect from a quality four star hotel. All 38 bedrooms are en-suite, and there are 8 self-catering cottages known as "The Waterhouses" for those who prefer some extra space (great for conference organisers).

The largest conference room, the Robert Owen Room, can seat up to 200 delegates. Our conference centre hosts 4 purpose built conference rooms to accommodate up to 120 delegates. Just yards from the hotel, the facilities of the New Lanark Visitor Centre are also available, with a further three conference rooms beautifully restored to their original condition.

Our wide range of delegate menus offer quality Scottish cuisine, cooked using local Lanarkshire produce wherever possible. With 24-hour delegate rates starting at just £105.00, we offer great value too. As the hotel is owned by an independent charity, all the profits are reinvested in the restoration and revitalisation of the historic mill community.

When arranging your conference or exhibition at the New Lanark Mill Hotel, do please contact me to arrange a tour of our superb facilities, I would be delighted to show you around.

With best wishes

Lynne Cooper
Conference & Events Manager
New Lanark Mill Hotel

Tel. 01555 667200

Direct Line .01555 667220

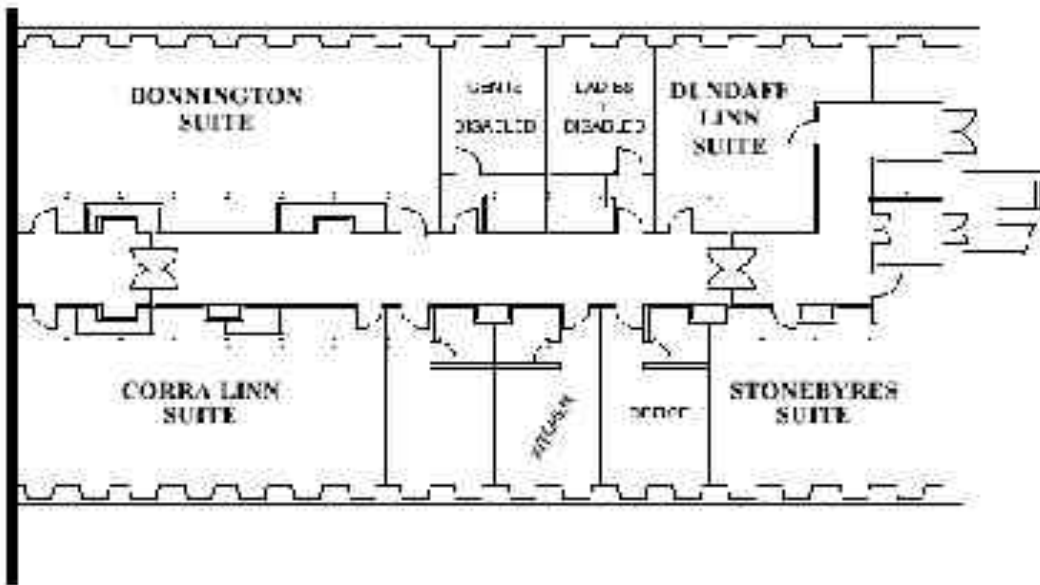
Fax.01555 667222

E-mail: lynne.cooper@newlanark.org

New Lanark Mill Hotel - Plan of Conference Suites

Our conference suites are filled with natural light and have wonderful outlooks onto either the majestic River Clyde or New Lanark World Heritage Village. Watch your delegates relax in the unique ambience of New Lanark. Why not enjoy a lunchtime stroll to the Falls of Clyde Wildlife Reserve or explore the award-winning visitor centre?

Conference Suite - Level 5



Conference Facilities

Room Name	Theatre Style	Classroom	Board Room	U-Shaped	Reception / Buffet	Dinner	Length	Width	Height	Power/ Phone points
Bonnington	100	60	50	50	130+	70	17m / 56ft	7.7 m / 25.4ft	3m / 10ft	12 / 9
Corra Linn	100	60	50	50	130+	60	14.8m / 49ft	7.6 m / 25.1ft	3m / 10ft	11 / 10
Stonebyres	60	40	35	35	50+	40	8.95 m / 30ft	7.6 m / 25.1ft	3m / 10ft	7 / 2
Dundaff	40	18	25	20	30+	25	8.2m / 27ft	7.7m / 25.4ft	3m / 10ft	9 / 2
Robert Owen @	200	50	40	40	200+	150	33m / 109ft	8m / 26ft	3m / 10ft	10 / 2

Additional items:

If the Day or 24-hour delegate packages do not suit your needs, the following room hire and equipment charges will apply. We are always happy to tailor our services to meet your individual requirements.

Equipment Hire	Daily Charge	Room Hire	Half Day Hire	Full Day Hire
OHP & Screen	£30	Robert Owen	£300	£600
Flip Chart	£15	Bonnington	£275	£550
Television & Video	£30	Corra Linn	£275	£550
35mm Carousel Projector	£30	Stonebyres	£200	£400
Data Projector (PowerPoint)	£95	Dundaff	£120	£220
Laptop for Data Projector	£60	Extra syndicate rooms	£80	£80

Conference Lunch Menus

At New Lanark, we recognise the need for flexibility. No matter what you are planning - Away Days, Business Planning Sessions or Strategy Meetings - we have a package to suit. Below are samples of typical lunch menus. The menu will change daily and will feature dishes based on the freshest ingredients chosen by our specialist chef that day.

Typical Buffet Lunch - served either in the Restaurant or Conference Centre

Typical Forked Buffet

Roast Loin of Pork, glazed apples and sultana with a Cider Sauce

Baked Fillet of Trout on shredded carrots and courgette with a lemon and basil dressing

Vegetarian Mushroom Ravioli with a sun-dried tomato sauce

*Roast Potatoes
Seasonal Vegetables
Seasonal Salad Leaves*

Lemon Mousse Gateau with fresh cream

Sliced Fruit Platter

Typical Forked Buffet

Poached Scottish Salmon with a citrus and dill butter sauce

Supreme of Chicken Tikka Masala style

Vegetarian Mixed Nuts Stir Fry

*Savoury Rice
New Potatoes
Seasonal Salad Leaves*

Warm Apple Tart and Vanilla Sauce

Sliced Fruit Platter

Typical Finger Buffet Choices

- Sandwiches (inc. vegetarian) (V)
- Vegetable pakora with chilli dip (V)
 - Vol au vent (V)
 - Spinach & feta goujon (V)
- Chicken satay with peanut sauce
- Thai fish cake with hot & sweet dip
- Breaded prawns with tartar sauce

Desserts

- Sliced fruit platter
- Chantilly profiteroles with toffee sauce

Typical Finger Buffet Choices

- Sandwiches (inc. vegetarian)(V)
- Vegetable spring roll with sweet & sour dip (V)
 - Broccoli & cheese quiche(V)
- Vegetable samosa with minted yoghurt dip(V)
 - Tempura prawns with teriyaki sauce
 - Salmon brochetta with lemon dill dip
 - Breaded chicken fillet with BBQ dip

Desserts

- Sliced fruit platter
- Chocolate fudge gateau

Making Your Conference Special

Surrounded by native woodlands and close to the famous Falls of Clyde, New Lanark has been restored as a living community and is now one of the most popular attractions with an award-winning Visitor Centre and Hotel. Normally, the Visitor Centre is open to the public from 11am-5pm every day. However, due to popular demand from conference delegates busy during the day, we can now offer a range of special options for groups wishing to visit in the evening. To discuss your requirements in detail or to book your visit, please speak to your conference organiser.

Description of Tour	Price per person	Discount (if applicable)	Special conditions
Day Tour	£5.95 self-guided		11am - 5pm
Evening Guided Tour	£5.95 (minimum 12 visitors)	£4.95 (minimum 30 visitors)	1 hour / 5pm - 8pm
New Millennium Experience	£9.95 (inc. guided tour. Minimum 50 visitors)	£6.95 (ex-guided tour. Minimum 50 visitors)	2 hours min / 5-8pm / Apr-Oct
Robert Owen's School	£3.95 (minimum 60 visitors)	NA	1 hour / 5pm-8pm
Robert Owen's School plus tour	£6.95 (minimum 60 visitors)	NA	
School plus Millennium Experience	£9.95 (minimum 60 visitors)	NA	
Complete Tour of New Lanark	£12.95 (minimum 60 visitors)	NA	

Evening guided tours

Enjoy a private tour of the village with our friendly local guide, calling in to see a restored 1820s and 1930s Mill workers' home and (for a stark contrast) the house of New Lanark's most famous mill manager, Robert Owen.

New Millennium Experience

A self-guided visit to the Centre, suitable for large groups. Includes introductory video, entrance to the New Millennium Experience, and a chance to see working textile machinery. Can be combined with a special evening guided tour of the village, if required.

Robert Owen's School - A private self-guided visit to the most ambitious restoration project ever undertaken by the Conservation Trust. Includes a chance to see the new 'Annie Mcleod's Story', an exciting show that tells the story of what life was like in the village back in 1820, through the eyes of a 10-year-old mill-girl. If you have time, you can combine a visit to the School with exclusive use of the New Millennium Experience, or a private guided tour of the village.

Robert Owen's School plus tour - Includes exclusive use of School and guided tour of village

Robert Owen's School plus Millennium Experience - includes exclusive use of Robert Owen's School and the New Millennium Experience,

Complete tour of New Lanark - includes guided tour of village and exclusive use of both New Millennium Experience and Robert Owen's School.

Music & Entertainment

We regularly work with a number of bands and entertainers, and our elegant function rooms in the Visitor Centre are perfect for ceilidhs, party nights, Murder Mysteries and even Karaoke! Please ask for further information.

Special memento of your visit

You may like to offer your guests a special memento of their visit, such as one of Robert Owen's "silent monitors". Or an engraved New Lanark whisky tot glasses or sumptuous New Lanark fudge made in our country kitchen. We would be delighted to arrange for a gift to suit your budget.

Private presentation on New Lanark

Since 1974, New Lanark Conservation Trust has pioneered a radical approach to heritage conservation. For a small donation of £50, we offer private talks from a member of the Trust management staff. Topics include history, and urban conservation and regeneration.

Private tour of the SWT Falls of Clyde Wildlife Reserve

New Lanark enjoys a dramatic riverside location, close to the Falls of Clyde. The area is now protected by the Scottish Wildlife Trust as the Falls of Clyde Wildlife Reserve. For details please call the Scottish Wildlife Trust on +44 (0)1555 665262.

Conference Options

Day Packages

Dale's Standard

£32.50 (inc VAT)

Day Delegate Rate includes:

- Conference Room Hire
- Morning Coffee & Biscuits
- Two-course Fork or Finger Buffet
- Afternoon Tea & Coffee & biscuits
 - Mineral Water & Cordials
 - OHP
 - Flipchart
 - Pads & Pens

Dale's Premium

£37.00 (inc. VAT)

Day Delegate Rate includes:

- Conference Room Hire
- Arrival Coffee, Orange Juice with Bacon Rolls or Croissants
- Morning Coffee & Biscuits
- Two-course Set Menu or Two course Fork Buffet
- Afternoon Tea & Scones
- Mineral Water & Soft Drinks
 - OHP
- Flipchart & Pads & Pens
 - TV & Video

Residential Packages

Owen's Standard

£105.00 (inc. VAT)

24-Hour Delegate Rate includes:

RESIDENTIAL
Dale's Standard Day Package

PLUS

- En-suite bedroom
- Full Scottish breakfast
- Three course dinner

Owen's Premium

£113.50 (inc. VAT)

24-Hour Delegate Rate includes:

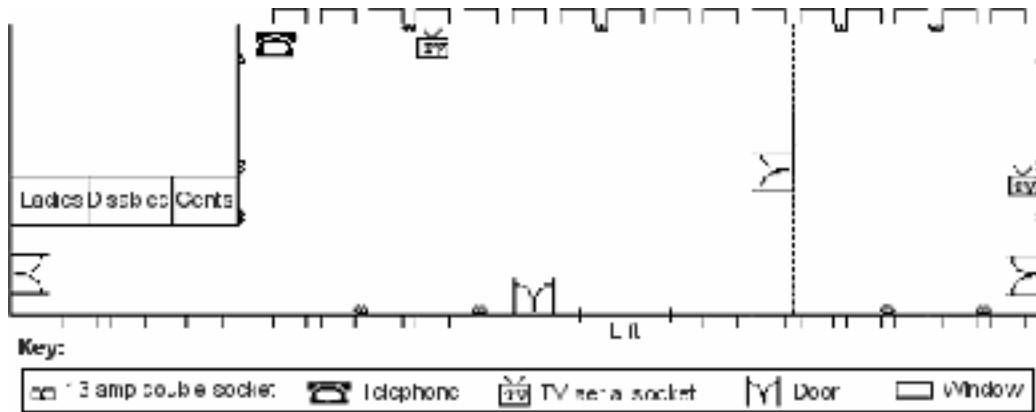
RESIDENTIAL
Dale's Premium Day Package
PLUS

- En-suite Bedroom with Complimentary Newspaper
- Full Scottish breakfast
- Three course dinner with a half bottle of House Wine

New Lanark Mill Hotel - Plan of the Robert Owen Room

Our function suite, The Robert Owen Room is filled with natural light and has a wonderful outlook onto either the majestic River Clyde or New Lanark World Heritage Village. Watch your delegates relax in the unique ambience of New Lanark. Why not enjoy a lunchtime stroll to the Falls of Clyde Wildlife Reserve or explore the award-winning visitor centre?

Robert Owen Room - Level 4



New Lanark Mill Hotel Conference Facilities

Room Name	Theatre Style	Classroom	Board Room	U-Shaped	Reception /Buffet	Dinner	Length	Width	Height	Power/ Phone points
Robert Owen @	200	50	40	40	200+	150	33m/109ft	8m /26ft	3m/10ft	10 / 2
Bonnington	100	60	50	50	130+	70	17m/56ft	7.7m/25.4ft	3m/10ft	12 / 9
Corra Linn	100	60	50	50	130+	60	14.8m/49ft	7.6 m/25.1ft	3m/10ft	11 / 10
Stonebyres	60	40	35	35	50+	40	8.95/30ft	7.6m/25.1ft	3m/10ft	7 / 2
Dundaff	40	18	25	20	30+	25	8.2/27ft	7.7m/25.4ft	3m/10ft	9 / 2

@ Situated on Level 4

Additional items:

If the Day or 24-hour delegate packages do not suit your needs, the following room hire and equipment charges will apply. We are always happy to tailor our services to meet your individual requirements.

Equipment Hire	Daily Charge	Room Hire	Half Day Hire	Full Day Hire
OHP & Screen	£30	Robert Owen	£300	£600
Flip Chart	£15	Bonnington	£275	£550
Television & Video	£30	Corra Linn	£275	£550
35mm Carousel Projector	£30	Stonebyres	£200	£400
Data Projector (PowerPoint)	£95	Dundaff	£120	£220
Laptop for Data Projector	£60	Extra syndicate rooms	£80	£80

TERMS AND CONDITIONS – PLEASE READ CAREFULLY BEFORE SIGNING BELOW

- **Booking.** A provisional booking may be made for a date, and will be held for 14 days. A written confirmation letter and a deposit secures your booking. In the case of the letter not being received by the hotel after the 14-day period, the hotel reserves the right to release the booking without consultation with the client.
- **Final Numbers:** The hotel requires the approximate number of delegates at the time of booking. The final number for DAY delegates is required 48 hours before the event. Clients will be charged for this number of delegates, or more if numbers increase on the day.
Sunday to Thursday - The final number of RESIDENTIAL delegates must be submitted 14 days before the event. Clients will be charged for this number or more if it increases.
Friday & Saturday – The final number of RESIDENTIAL delegates must be submitted at the time of booking. Clients will be charged for this number or more if it increases.
- **Payment of Account.** The account must be settled within 28 days of the event date. Failure to settle within this time will result in interest being added to the outstanding amount at a rate of base + 2%.
- **Prices:** Prices within this booklet are valid until the 31st December 2005 and are inclusive of VAT at the current rate of 17.5%. However the hotel does reserve the right to make adjustments to those prices should the need arise.
- **Cancellation:** Should you need to cancel the event , the following charges will apply.

Within 16 weeks	25% of total estimated value
Within 12 weeks	40% of total estimated value
Within 8 weeks	60% of total estimated value
Within 4 weeks	80% of total estimated value
Within 1 week	100% of total estimated value

AGREEMENT & BILLING DETAILS:

Client details:

Name of Client _____

Company _____

Address _____

Billing contact and details:

Name of billing contact _____

Address _____

Telephone No: _____ Extension: _____

Note this information is essential for reservation.

I hereby agree to the terms and conditions as laid out above. I/We understand that as a result, I am responsible for the booking and any payment due to New Lanark Hotels Ltd.

Signed on behalf of client:

..... Date:.....

Signed on behalf of New Lanark Hotels Ltd:

..... Date:.....